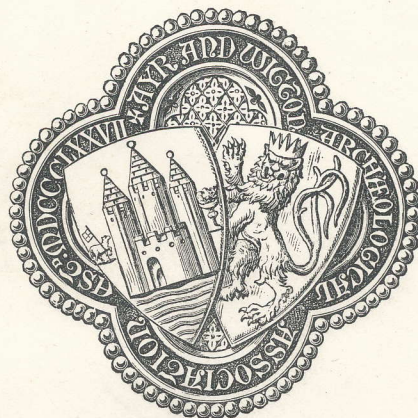


ARCHÆOLOGICAL
AND
HISTORICAL COLLECTIONS

RELATING TO THE COUNTIES OF

AYR AND WIGTON

VOL. I.



EDINBURGH

PRINTED FOR THE AYR AND WIGTON ARCHÆOLOGICAL ASSOCIATION

MDCCCLXXVIII

1878

CONTENTS.

| | PAGE |
|---|------|
| I. NOTES ON THE ANCIENT STONE IMPLEMENTS OF WIGTONSHIRE. By the Rev. G. Wilson, C.M.S.A. Scot., F. C. Manse, Glenluce | 1 |
| II. NOTICES OF ANCIENT URNS FOUND IN THE CAIRNS AND BARROWS OF AYR- SHIRE. By James Macdonald, LL.D., M.A., F.S.A. Scot. | 31 |
| III. NOTE ON SOME EXPLORATIONS IN A TUMULUS CALLED THE "COURTHILL," IN THE PARISH OF DALRY AND COUNTY OF AYR. By R. W. Cochran-Patrick, LL.B. Cantab., B.A. Edin., F.S.A. Scot. | 55 |
| IV. ANTIQUITIES FOUND IN AYRSHIRE, AND PRESERVED AMONGST THE ARCHÆO- LOGICAL COLLECTIONS OF MISS BROWN OF WATERHAUGHS AND LANFINE. From Notes by the late Mr. Brown | 61 |
| V. NOTE ON A BRONZE BUCKLER FOUND IN THE PARISH OF BEITH AND COUNTY OF AYR. By John Evans, D.C.L. Oxon., F.R.S., F.S.A. | 66 |
| VI. NOTE ON THE CAPRINGTON HORN. By R. W. Cochran-Patrick, LL.B. Cantab., B.A. Edin., F.S.A. Scot. | 74 |
| VII. THE HUNTERSTON BROOCH. By Professor Dr. George Stephens, F.S.A. London and Edinburgh | 76 |
| VIII. NOTES ON SOME AYRSHIRE EXAMPLES OF POTTERY, SUPPOSED TO BE MEDÆVAL. By James Macdonald, LL.D., M.A., F.S.A. Scot. | 80 |
| IX. THE HERALDRY OF WIGTONSHIRE. By Sir Herbert Maxwell, Bart., of Mon- reith | 85 |
| X. REMARKS ON THE EXISTING BUILDINGS AT KILWINNING ABBEY. By William Galloway, Architect, C.M.S.A. Scot. | 89 |
| XI. COLLECTIONS TOWARDS A HISTORY OF THE MONASTERY OF KILWINNING | 115 |
| XII. PROCEEDINGS OF THE GILD COURT OF AYR. From the Ayr Manuscript. By Thomas Dickson, Curator of the Historical Department of H.M. General Register House, Edinburgh | 223 |

IV.

ANTIQUITIES FOUND IN AYRSHIRE, AND PRESERVED AMONGST THE ARCHÆOLOGICAL COLLECTIONS OF MISS BROWN OF WATERHAUGHS AND LANFINE.

Fig. 1. Stemmed and barbed arrow-head of flint, finely serrated along the edges. Found on the estate of Lanfine, 10 feet under moss, in June 1856. This very beautiful specimen may be compared with the one figured in Evans's *Ancient Stone Implements*, Fig. 316, but the minute chipping is more like the work on Fig. 317, in the same volume.



FIG. 1.—Full size.

Fig. 2. Stemmed arrow-head of flint, found on the estate of Lanfine in May 1859. This is a ruder and more imperfect example than the first.



FIG. 2.—Full size.



FIG. 3.—Full size.

Fig. 3. Stemmed and barbed arrow-head of flint, found on the estate of Lanfine 9th September 1864. This is of finer work than the immediately preceding, but does not show the same amount of careful finish as the first example.



FIG. 4.—Full size.

Fig. 4. Stemmed arrow-head of flint, found on the estate of Lanfine.

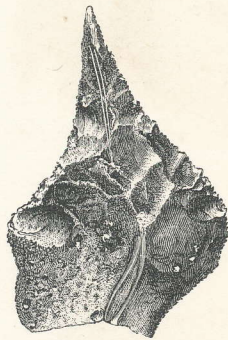


FIG. 5.—Full size.

Fig. 5. Drill of flint found in the parish of Galston, in March 1857, near where Fig. 1 was discovered. This specimen is of the same type, but of larger size than the example figured in Evans's *Ancient Stone Implements*, Fig. 229.

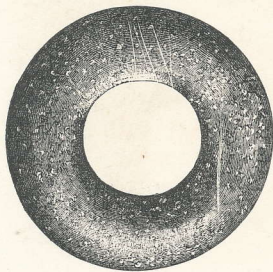


FIG. 6.—Full size.

Fig. 6. Perforated circular bead of serpentine, found $7\frac{1}{2}$ feet below the surface when draining a peat moss on Lanfine, July 5, 1862.

Fig. 7. Perforated piece of cannel coal, found in a cairn on Moss-side, Loudoun parish, by James Millar, farmer there, in 1860. This example is figured one half of the size of the original.

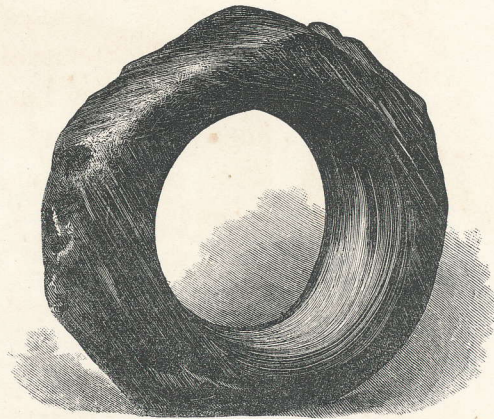


FIG. 7.—Scale $\frac{1}{2}$.

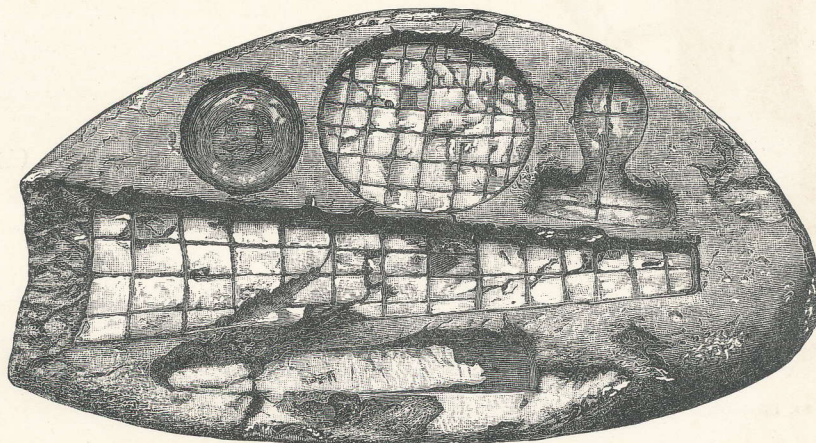


FIG. 8.—Scale $\frac{1}{4}$.

Fig. 8. Mould of serpentine found at Trochraigue, near Girvan, in 1851. It was exhibited to the Society of Antiquaries of Scotland in February 1852,¹ and is fully described in their *Proceedings*. It is an irregular oval slab of green serpentine, $16\frac{1}{2}$ inches in length, $9\frac{1}{2}$ inches in breadth, and about $2\frac{1}{4}$ inches greatest thickness. The same stone is found *in situ* about eight miles south of where it was discovered. Fig. 9 shows the other side of the same mould.

¹ *Proc. Soc. Ant. Scot.*, vol. i. p. 45.

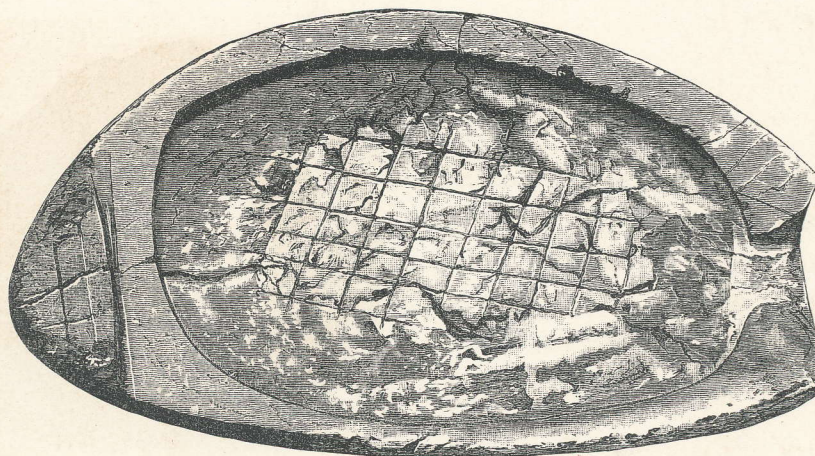
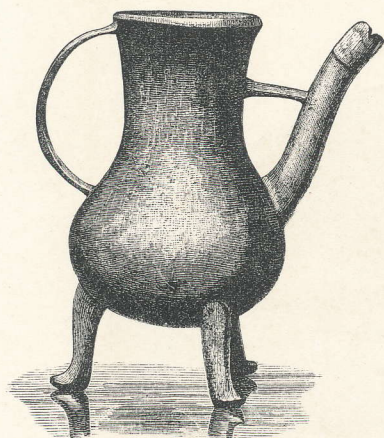
FIG. 9.—Scale $\frac{1}{4}$.Fig. 10. Bronze flagon found at Carleith,
four miles from Lanfine.FIG. 10.—Scale $\frac{1}{4}$.Fig. 11. Bronze pot
found in Ayrshire.FIG. 11.—Scale $\frac{1}{4}$.

Fig. 12. Bronze vessel found at Monk,
near Galston Moor.

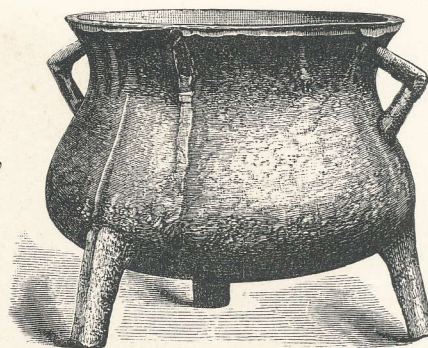


FIG. 12.—Scale $\frac{1}{8}$.

An urn in the same collection, figured and described in Dr. Macdonald's paper, p. 50 of this volume, was presented to the late Thomas Brown of Waterhaughs by C. D. Gairdner, Esq.